

Map Legend *(map on reverse)*

Trailheads



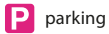
hiking

Trails

maintained

0.24 approximate distance in miles between trail junctions

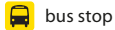
Facilities



parking



viewpoint



bus stop

Publicly owned land

Shinglemill Creek Preserve

King County Parks

Vashon-Maury Island Land Trust

Vashon Parks District

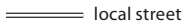
Other basemap features



wetland



arterial street



local street



elevation contour (interval = 50 ft.)

April 2020

Map created by the King County Parks and Recreation Division and the King County GIS Center: www.kingcounty.gov/gis.

Printed on recycled paper.

©2013, 2020 King County, Washington.

The information included on this map has been compiled by King County staff from a variety of sources and is subject to change without notice. King County makes no representations or warranties, express or implied, as to accuracy, completeness, timeliness, or rights to the use of such information. This document is not intended for use as a survey product. King County shall not be liable for any general, special, indirect, incidental, or consequential damages including, but not limited to, lost revenues or lost profits resulting from the use or misuse of the information contained on this map. Any sale of this map or information on this map is prohibited except by written permission of King County.

This information is available in alternative formats upon request. Please call 206-477-4527 or 1-800-325-6165 ext. 6-4232.

Washington Relay Service: 1-800-833-6388.

For information about King County Parks, please call 206-477-4527.

Visit King County Parks on the Internet at www.kingcounty.gov/parks.

Shinglemill Creek Preserve

The Shinglemill Creek Trail gains elevation from sea level to 400 feet, making it a great round trip “workout” trail. To enjoy the spectacular views across the canyon and into the creek without the steep climb, dropping off a car at the trailhead on Cedarhurst Road allows walkers to make a one-way trek downhill starting from the trailhead off SW 156th Street.

The Shinglemill Preserve was acquired with the support of the Washington Wildlife and Recreation Program, private donations, and King County’s Conservation Futures Program. The Preserve is a partnership of King County, the Vashon-Maury Island Land Trust, and the Vashon Park District.



Area

168 acres

Trail length

2.6 miles

Trail uses

The terrain is steep and sandy and, as such, is not appropriate or safe for horses or bicycles. Dogs are allowed on leash, with leashes provided for loan at each trailhead. The trail crosses private property. We enjoy this trail at the invitation of those landowners, and we ask that you respect their property rights by adhering closely to the trail rules.

Access

From **Vashon Highway**, turn west on SW 156th Street. After approximately .25 mile turn right onto the gravel driveway at the Shinglemill Creek Trail sign. Follow the driveway to the parking lot.

Limited parking is also available on **Cedarhurst Road** at the other end of the trail and for Fern Cove. At the bottom of the hill, just south of the entrance sign to Fern Cove, pull off to the east side of Cedarhurst Road and park in front of the metal gate. There is room for about three vehicles. From there it is an easy walk into Fern Cove on the west side of the road, or the Shinglemill Creek Trail on the east side of the road.

Shinglemill Creek Preserve is served by **Metro bus routes 118 and 119** along Vashon Highway SW.



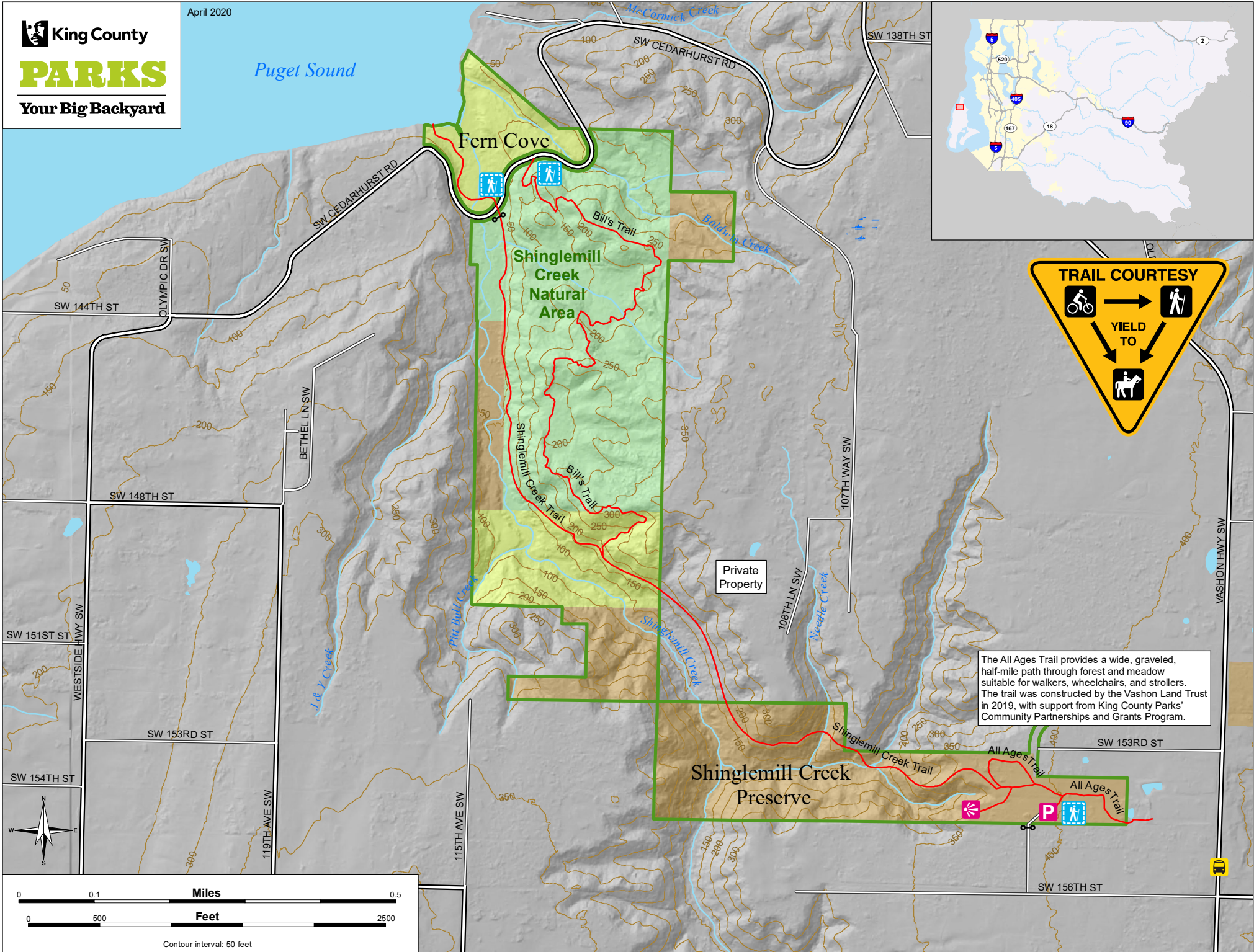
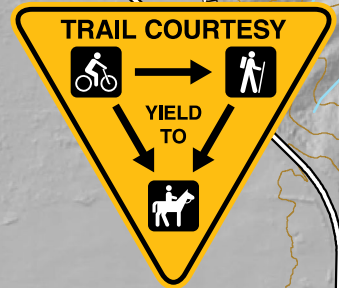
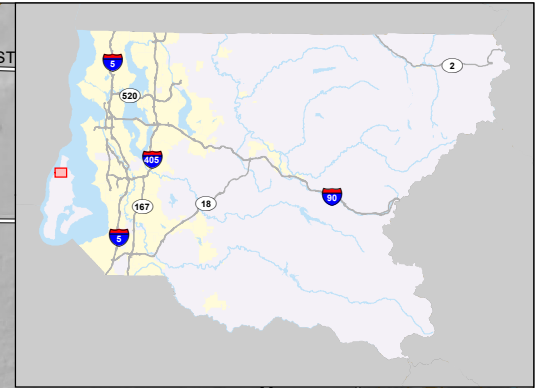
SHINGLEMILL CREEK

The Shinglemill Creek Preserve is located in the northwest part of Vashon Island and encompasses 168 acres along the lower mainstem of Shinglemill Creek – Vashon’s second-largest creek. Efforts to preserve habitat in the Shinglemill Watershed began in 1994 with the purchase of the historic and iconic Fern Cove, the largest stream delta on Vashon where Shinglemill Creek empties into Colvos Passage on the island’s west shoreline. The lower portion of the Shinglemill Creek trail offers opportunities to watch for coho salmon returning to spawn, typically in November and December after heavy rains. The delta at Fern Cove offers Vashon’s best spot for viewing shorebirds.



Want the map on your phone? Text **KING SHINGLE** to 468311
*Message & Data Rates May Apply

Puget Sound



Private Property

The All Ages Trail provides a wide, graveled, half-mile path through forest and meadow suitable for walkers, wheelchairs, and strollers. The trail was constructed by the Vashon Land Trust in 2019, with support from King County Parks' Community Partnerships and Grants Program.

